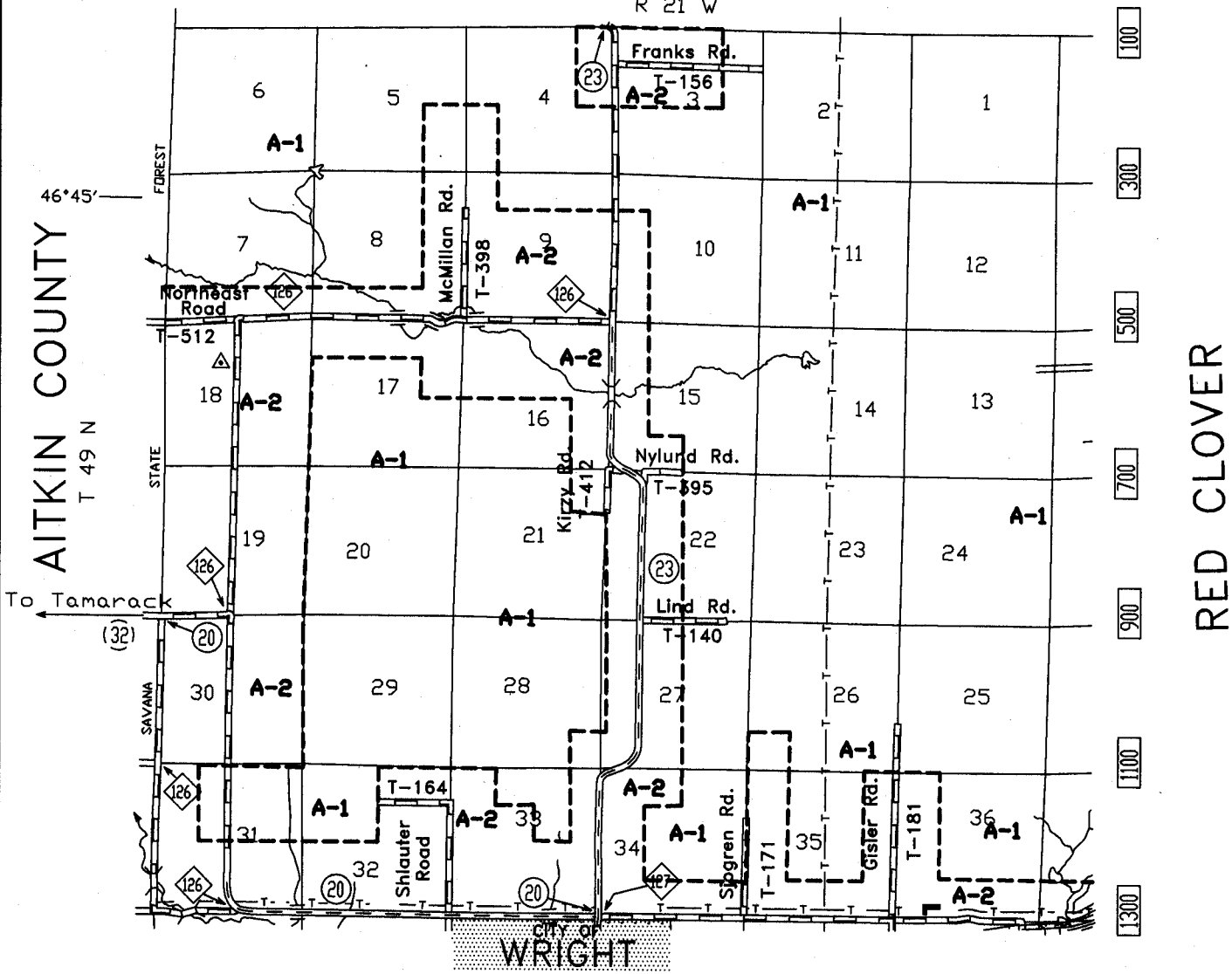


# BESSEMAN

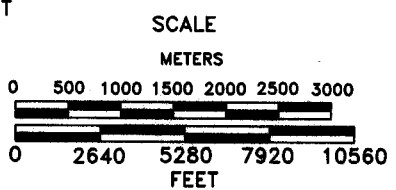
T. 49 N. - R. 21 W.

ST. LOUIS COUNTY

7300 7100 6900 6700 6500 6300 6100



**LEGEND**  
 A-1 AGRICULTURE/FOREST MANAGEMENT  
 A-2 AGRICULTURE/RURAL RESIDENTIAL  
 C-1 COMMERCIAL RECREATION  
 C-2 HIGHWAY COMMERCIAL  
 M-1 LIMITED INDUSTRIAL  
 R-1 RECREATION RESIDENTIAL



**LEGEND**  
 STATE HIGHWAY = 210  
 COUNTY STATE AID HIGHWAY = 7  
 COUNTY HIGHWAY = 45  
 TOWNSHIP ROADS = T-88  
 UNORGANIZED TOWNSHIP ROADS = UT-88  
 TELEPHONE LINES = T  
 NATURAL GAS LINES = NG  
 TRANSMISSION LINES = T  
 FEDERAL AID PRIMARY = F.A.P.  
 FEDERAL AID SECONDARY = F.A.S.