

PROGRESS

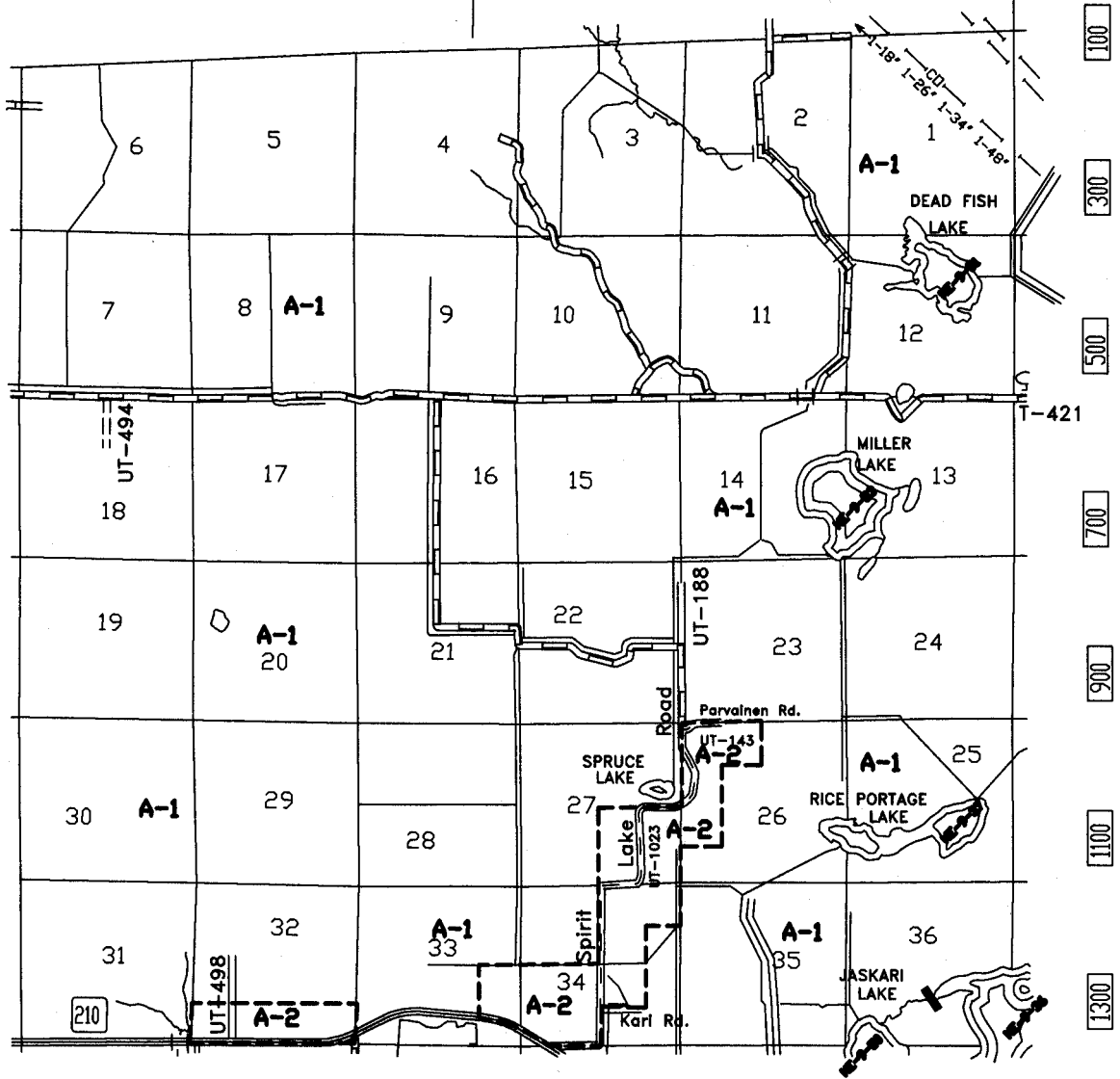
T. 49 N. - R. 19 W.

ST. LOUIS COUNTY

4900 4700 4500 4300 4100 3900 3700

RED CLOVER

PERCH LAKE

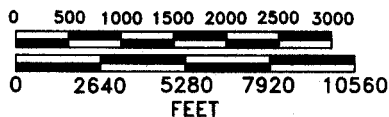


CORONA

LEGEND

- A-1 AGRICULTURE/FOREST MANAGEMENT
- A-2 AGRICULTURE/RURAL RESIDENTIAL
- C-1 COMMERCIAL RECREATION
- C-2 HIGHWAY COMMERCIAL
- M-1 LIMITED INDUSTRIAL
- R-1 RECREATION RESIDENTIAL

SCALE
METERS



LEGEND

- STATE HIGHWAY =
- COUNTY STATE AID HIGHWAY =
- COUNTY HIGHWAY =
- TOWNSHIP ROADS =
- UNORGANIZED TOWNSHIP ROADS = UT-88
- TELEPHONE LINES =
- NATURAL GAS LINES =
- TRANSMISSION LINES =
- FEDERAL AID PRIMARY = F.A.P.
- FEDERAL AID SECONDARY = F.A.S.